



*The* Fauquier  
CHAMBER

**Dedicated to the growth and prosperity of local businesses through building relationships, advocating for business, and providing resources and support.**

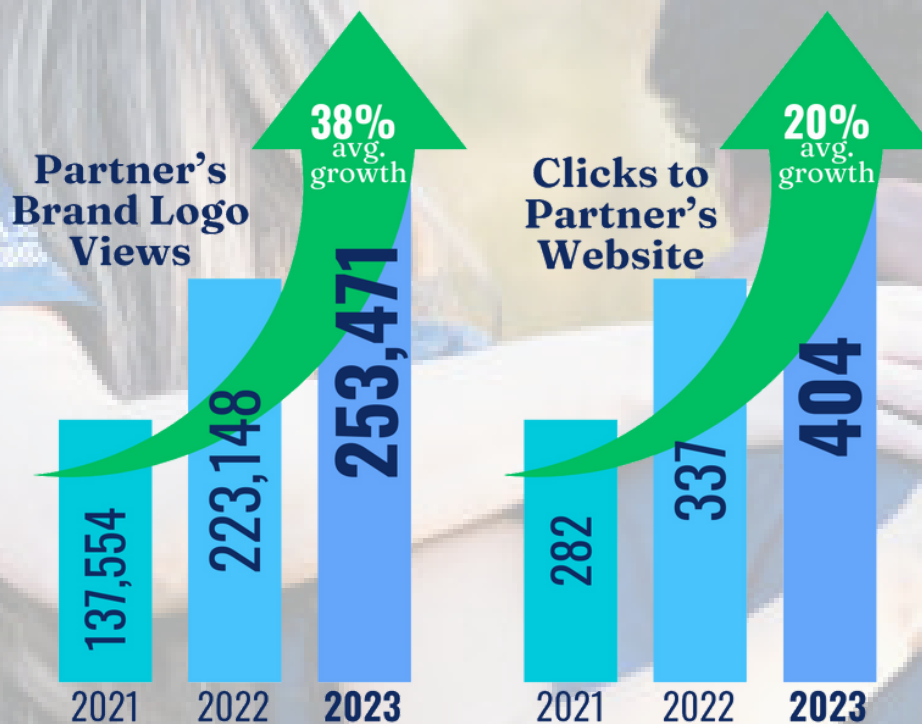
**2024 Partnership Opportunities**

# The Fauquier CHAMBER

## The Value of Partnerships

Our Partnership Programs include exclusive discounts on advertising, event promotion, and networking opportunities. Chamber partners can position their business to become better integrated in the business community enhancing opportunities to drive market awareness of their products and services.

Although each Partnership is designed to address the needs of different types of businesses, there are some elements that remain consistent throughout. Each Partnership will come with your company logo and website link displayed on specific pages throughout our website. Below is a snapshot of the impact these “banner ads” have produced over the years.



Our success is predicated on yours, therefore we are always looking for new ways and ideas that provide the support our members and their businesses need to grow and prosper, so each partnership can be customized to align with the needs of the business, it's goals, objectives and budget.



## **2024 Investing Partnership**

The Fauquier Chamber's highest and most prestigious partnership designed for businesses looking for the maximum amount of continuous exposure at all events and on all chamber marketing platforms.

- Complimentary Annual Membership (up to a \$1200 value)
- Company logo with hyperlink on Home page of Website (\$150 value)
- Company logo with hyperlink on 7 additional Chamber website banner displays (\$1050 value)
- Recognition on all promotional materials including programs, signage and digital media (\$750 value)
- Complimentary booth at Spring into Fall Festival (\$300 value)
- Table for 8 at Gala & Annual Meeting (\$800 value)
- Enhanced Website Directory Listing on Chamber Website (\$150 value)
- Complimentary Sponsorship to one each of the Elite and Premier Events (excluding WBC) (\$850 value)
- Two Dedicated Company Profile E-Blasts (\$950 value)
- **\$5,000 for 12 consecutive months (a \$6,050 value if purchased separately)**

## **2023 Performance**

Below lists the number of impressions of the 2023 Investing Partners received as well as the average number of impressions per month

**Total Number of Impressions**

**68,678**

**Average Impressions per Month**

**174**



## **2024 Community Partnership**

**A value centric package designed for the smaller or new business who is looking for maximum exposure at a lower price point.**

- Complimentary Membership (up to a \$1200 value)
- Company logo with hyperlink on Home page of Website (\$150 value)
- Company logo with hyperlink on 4 additional Chamber website banner displays (\$600 value)
- Recognition on all promotional materials including programs, signage and digital media (\$750 value)
- Table for 4 at Gala & Annual Meeting (\$400 value)
- Enhanced Website Directory Listing on Chamber Website (\$150 value)
- Complimentary Sponsorship to either one Elite or Premier Event (excluding WBC) (up to an \$425 value)
- Two Dedicated Company Profile E-Blasts (\$950 value)
- **\$3,750 for 12 consecutive months (a \$4,625 value if purchased separately)**

## **2023 Performance**

**Below lists the number of impressions the 2023 Community Partners received along with the average number of impressions per month**

**Total Number of Impressions**

**41,523**

**Average Impressions per Month**

**103**





## **2024 Signature Partnership**

**Signature partners are most focused on brand and company awareness therefore benefits center more on digital and printed marketing.**

- Complimentary Membership (up to a \$1200 value)
- Company logo with hyperlink on Home page of Website (\$150 value)
- Company logo with hyperlink on 3 additional Chamber website banner displays (\$450 value)
- Recognition on all promotional materials including programs, signage and digital media (\$750 value)
- Enhanced Website Directory Listing on Chamber Website (\$150 value)
- Complimentary Sponsorship to either one Premier (excluding WBC) or Prime Event (up to an \$400 value)
- One Dedicated Company Profile E-Blasts (\$475 value)
- **\$3,000 for 12 consecutive months (a \$3,395 value if purchased separately)**

## **2023 Performance**

**Below lists the number of impressions all 2023 Investing Partners received as well as the average number of impressions per month**

**Total Number of Impressions**

**31,258**

**Average Impressions per Month**

**78**



## **2024 Associate Partnership**

**Associate partners prefer a harmonious balance between awareness, participation and budget management.**

- Company logo with hyperlink on Home page of Website (\$150 value)
- Company logo with hyperlink on 2 additional Chamber website banner displays (\$300 value)
- Recognition on all promotional materials including programs, signage and digital media (\$750 value)
- Enhanced Website Directory Listing on Chamber Website (\$150 value)
- Complimentary Sponsorship to either one Premier (excluding WBC) or Prime Event (up to an \$400 value)
- One Dedicated Company Profile E-Blasts (\$475 value)
- **\$1,700 for 12 consecutive months (a \$2,225 value if purchased separately)**

## **2023 Performance**

**The Chamber of commerce did not have any Associate Partnerships purchased in 2023.**



## **2024 New Business Partnership**

**New Business Partnerships are only available to newly formed businesses and only available for a 12 month period. After the 12th month, New Business Partners may choose from any of other Partnership levels conditional upon their membership type remaining in good standing.**

- Company logo with hyperlink on Home page of Website (\$150 value)
- Company logo with hyperlink on 1 additional Chamber website banner displays (\$150 value)
- Recognition on all promotional materials including programs, signage and digital media (\$750 value)
- Enhanced Website Directory Listing on Chamber Website (\$150 value)
- One Dedicated Company Profile E-Blasts (\$475 value)
- **\$1,200 for 12 consecutive months (a \$1,675 value if purchased separately)**

## **2023 Performance**

**The Chamber of Commerce did not have any New Business Partnerships purchased in 2023.**



## Partnership Agreement

Please select the Partnership Program you wish to engage with your business. Partnerships can be entered into at any time during the year and if one is selected to include membership dues, any dues already paid will be pro-rated to the month of the agreement.

- |  |   |
|--|---|
| <input type="checkbox"/> Investing Partnership \$5,000.00    | <input type="checkbox"/> Community Partnership \$3,750.00 |
| <input type="checkbox"/> Signature Partnership \$3,000.00    | <input type="checkbox"/> Associate Partnership \$1,700.00 |
| <input type="checkbox"/> New Business Partnership \$1,200.00 |   |

Business Name: \_\_\_\_\_

Authorized Representative: \_\_\_\_\_

Email: \_\_\_\_\_ Phone: \_\_\_\_\_

Signature: \_\_\_\_\_

Date: \_\_\_\_\_

All Partnerships will be invoiced to the member's account. Once invoice is paid, Staff will contact the authorized representative or designee to discuss details, select event sponsorships, select banner ad placement and all other details of selected Partnership.